



Panel Analysis of Intimate Relationships and Family Dynamics

Pairfam Advisory Board Meeting

October 10-11, 2013

Munich

PROGRAM

Thursday, 10th of October 2013

Joint dinner

08.00 p.m. "Restaurant am Chinesischen Turm" (Englischer Garten 2, 80538 Munich), meeting at 07:30 p.m. in the hotel lobby

Friday, 11th of October 2013

Welcome and introduction

09.00 - 09.20 a.m. Nauck: State of the pairfam project
09.20 - 09.40 a.m. Neyer / Hank: Self-introduction as new pairfam PIs
09.30 - 10.00 a.m. Brüderl: Field report and data editing of waves 1 - 5
10.00 - 10.30 a.m. Coffee break

Presentations of research conducted by the pairfam team

10.30 - 11.00 a.m. Munich I: Partnership, parenting and child development
11.00 - 11.30 a.m. Bremen: Childbearing behavior
11.30 - 12.00 a.m. Chemnitz: Intergenerational relationships
12.00 - 01.00 p.m. Lunch buffet

Discussion

01.00 - 02.30 p.m. General discussion: Accomplishments and challenges
02.30 - 03.00 p.m. Coffee break

Meeting

03.00 - 03.30 p.m. Meeting of the advisory board members
03.30 - 04.00 p.m. Meeting of the advisory board and the principal investigators

Organization

Daniel Fuss

TU Chemnitz

Phone: +49 371 531 37313

E-Mail: daniel.fuss@soziologie.tu-chemnitz.de

Bernadette Huyer-May, Josef Brüderl

LMU Munich

Phone: +49 89 2180 6218

E-Mail: bernadette.huyer-may@soziologie.uni-muenchen.de

Accommodation

Hotel Concorde

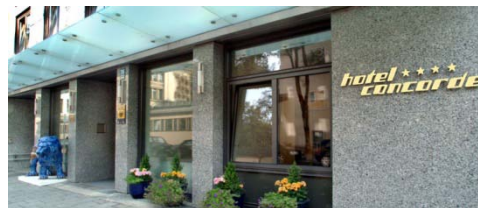
Herrnstraße 38-40

80539 Munich

Phone: +49 89 224515

Fax: +49 89 2283282

Web: www.concorde-muenchen.de/en/



How to get there

From the airport

Take either S-Bahn line S1 or S8 for a 35 minute train ride from the airport to downtown Munich. Exit the train at the "Isartor" stop and follow signs to "Thomas-Wimmer-Ring" for a two minute walk to the hotel.

From the main train station

From Munich's main train station, you can take any S-Bahn line in the direction of "Ostbahnhof". Exit the train at the "Isartor" stop and follow signs to "Thomas-Wimmer-Ring" for a two minute walk to the hotel.

Conference venue

New Town Hall (Neues Rathaus)

„Ratstrinkstube“

Marienplatz 8

80331 Munich



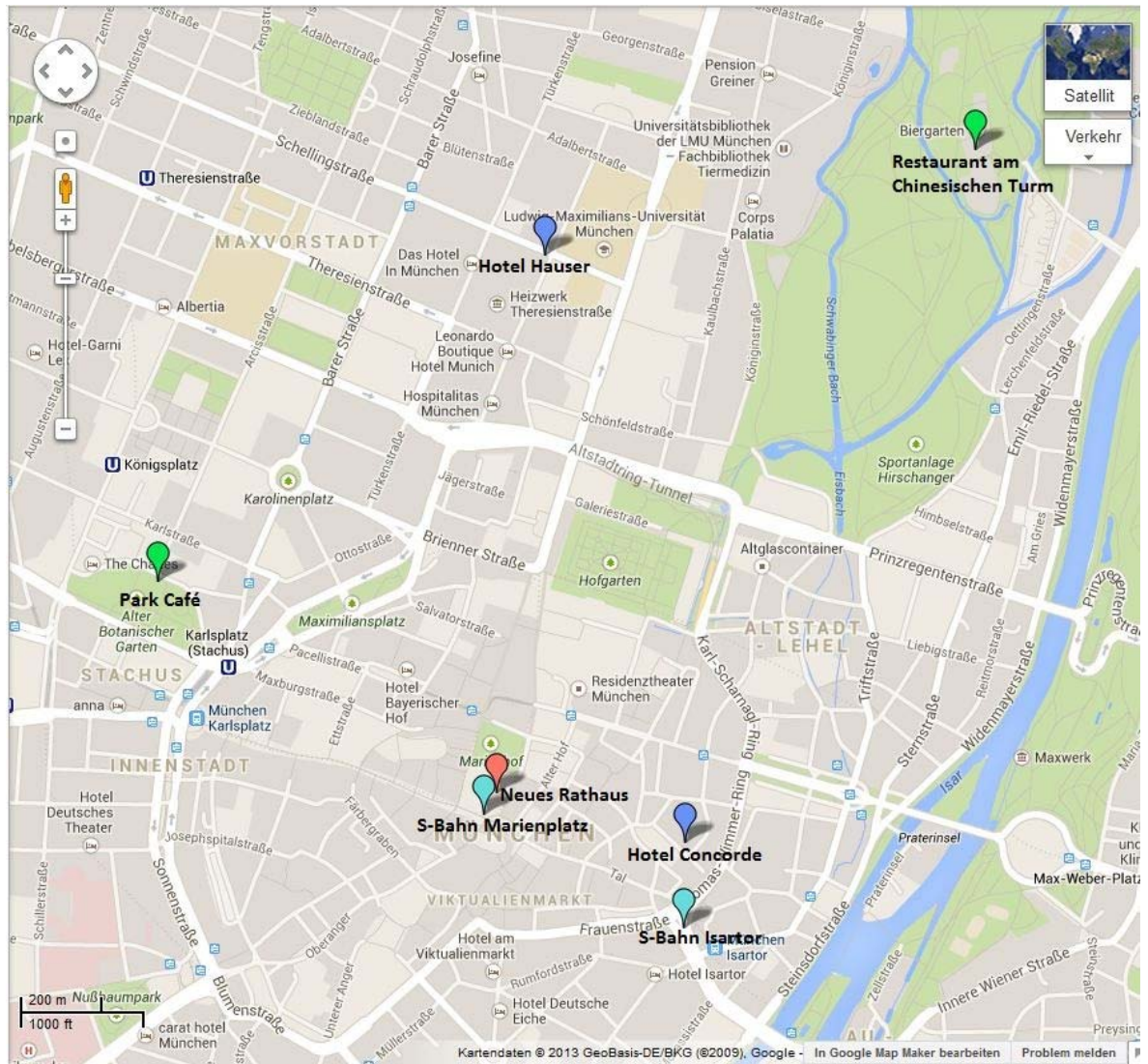
Web: www.muenchen.de/int/en/sights/attractions/new-town-hall-neues-rathaus.html

How to get there from the Hotel Concorde

By foot

Leaving your hotel turn right and go down the street. Turn left into "Hochbrückenstraße". After 200m turn right into "Tal". Go straight on until you reach "Marienplatz" after 250m where you can see the Town Hall on your right side. Total distance is about 600m (7 min).

Munich map



Conference venue

Take the main entrance of the New Town Hall (“Haupteingang am Fischbrunnen”) and follow the signs to the “Ratstrinkstube” on the right side.

