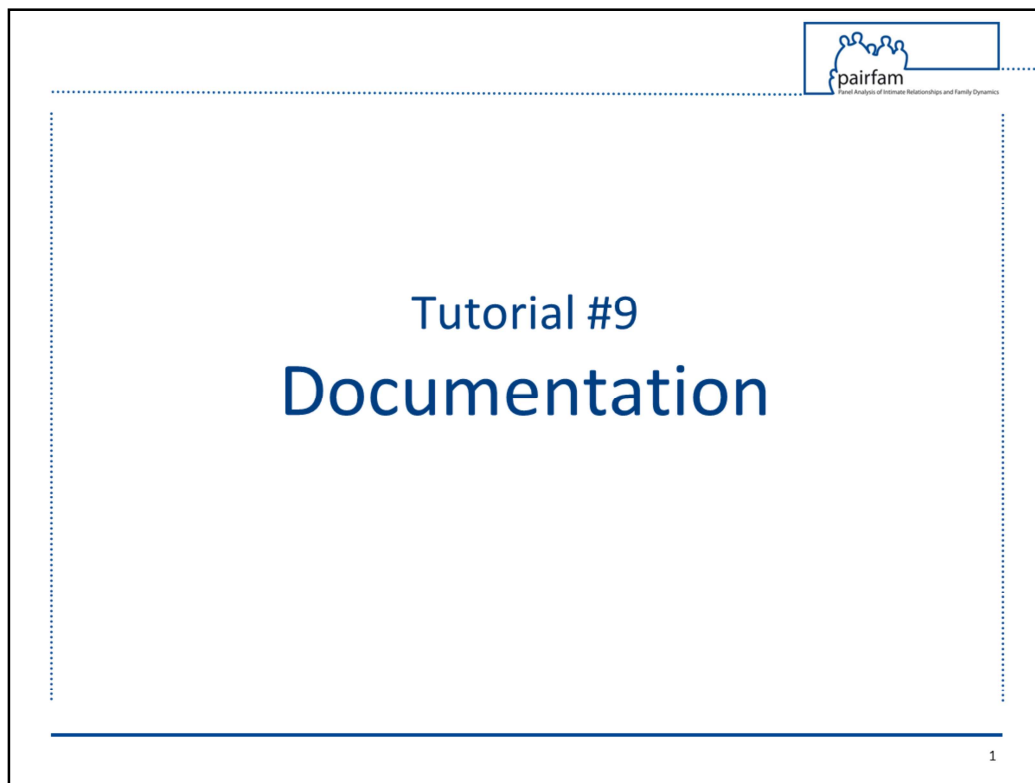


The corresponding video tutorials are available online:
https://www.youtube.com/playlist?list=PL7BcpOtSe5u_zQctYXz4ee79Zc9r4mfnr



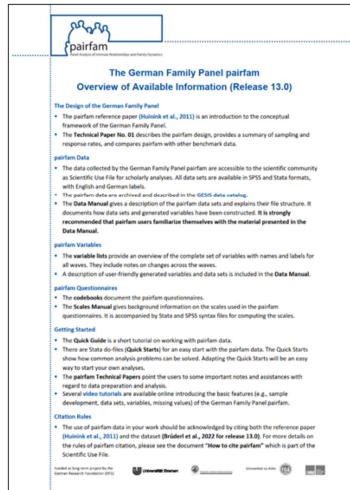
pairfam tutorial

9. Documentation

Kristin Hajek & Madison Garrett, May 2022

This ninth tutorial summarizes the documentation available for the *pairfam* project.

Documentation: Overview

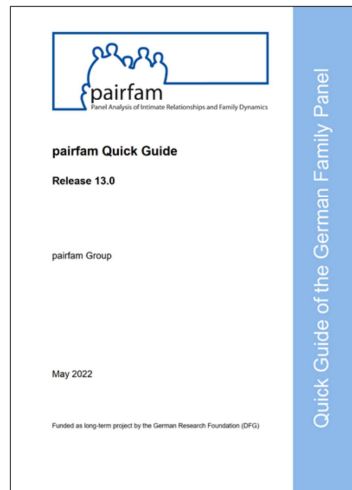


» Summary of available pairfam materials on one page (design, data, documentation, variables, questionnaires,...)

What is the Overview?

The Overview is a summary of the most important *pairfam* materials on one page. This is a good starting point where you can find prompts as to where to find more information on which topic.

Documentation: Quick Guide



- » Available documentation
- » Information on data sets, variables, and teaching version
- » Missing values
- » Matching (wide / long format)
- » Citation rules

What is included in the Quick Guide?

The Quick Guide gives a bit more in-depth description of documentation materials, available data sets, variables, and the teaching version, information on analyses and missing values, the combination of data sets in wide and long format, and citation rules.

Documentation: Codebooks

- » **Codebooks:** Complete information including question wording, answer possibilities, coding, filtering, interviewer instructions
- » **Questionnaires:** Copies of PAPI questionnaires for the parent, partner, and parenting surveys

Where do I find specific information on variables?

The codebooks are available in both German and English and include complete information on question wording, answer possibilities, coding, filtering, interviewer instructions, etc. for each group of respondents and each wave.

Copies of the PAPI questionnaires for parents, partners, and the parenting survey are also available, but are only available in German and do not include question numbers.

Documentation: Question Program

- » Detailed list of all variable names and labels, including information on changes between waves

5

Is there a quicker way to see which questions were asked to which respondent in which waves?

No need to go through all the codebooks for all waves and respondent type - there is a better way!

The Question Program is an Excel sheet that summarizes which questions were asked in which waves for each respondent type separately, including variable names and labels for each question and information on changes between waves.

However, the Question Program does not include information on exact variable labels, filtering, and question wording.

Therefore, we advise first looking through the Question Program to locate variables of interest and understand in which waves and to whom they were posed.

Then, take a closer look at these variables in the respective codebooks for question wording and filtering.

Documentation: Data Manual



- » Data structure and variables
- » Consistency checks
- » Preparation of generated data and variables
- » Weights

What is the Data Manual?

The Data Manual contains information about the data structure, data sets and variables, data preparation and consistency checks, generated data and variables, and a detailed documentation of the weighting variables.

We highly recommend skimming through the Data Manual – the Nuts and Bolts section is relevant to any analysis, and the index will tell you which other sections might be of interest, in particular the generated variables.

The Data Manual also contains sections dedicated to the integration of the *DemoDiff*, *step-up*, and refreshment samples, as well as changes in survey mode in waves 12 and 13 due to the COVID-19 pandemic.

Documentation: Technical Papers



TP1: Study design and field work

TP14: pairfam COVID-19 survey

TP16: Wave 12/13 design changes

TP17: Weights

What are the Technical Papers?

These reports were prepared by the *pairfam* team in order to inform users of important information and give support with regard to data preparation and data analysis.

We suggest reading through the titles to see if there is a topic of interest for your research. Some technical papers that are worth mentioning for all analyses are the following:

TP1 summarizes the study design and field work of all waves, including the sampling procedure, respondents and questionnaires, response and attrition rates, measures to maintain panel stability, interview duration, and validation analyses.

TP14 presents the design and instruments of the *pairfam* COVID-19 survey, an additional study that was conducted in 2020.

TP16 explains the effects of survey design modifications in waves 12 and 13 due to the COVID-19 pandemic.

TP17 is also helpful as a detailed overview of the included weighting variables in the anchor data and their application.

Documentation: Method Reports

KANTAR

Beziehungen und Familienleben in
Deutschland (pairfam)

Methodenbericht
Seite 13 (2020 / 2021)

vorgestellt von:

Kantar
Landsberger Str. 284
80807 München

Ihre Ansprechpartner:

Dr. Jutta Bitt
Associate Director
Tel: +49 89 5802 - 1518
E-Mail: jutta.bitt@kantar.com

Philipp Wöhl
Senior Project Manager
Tel: +49 89 5802 - 1508
E-Mail: philipp.woehl@kantar.com

Ulrich Schwabitz
Senior Director
Tel: +49 89 5802 - 1422
E-Mail: ulrich.schwabitz@kantar.com

München, Oktober 2021
MBD162011225

- » Kantar Public
- » Field work, samples, incentives, response rates, interviewer training
- » Wave-specific
- » German only

Who wrote the Method Reports?

The Method Reports were written by the survey institute Kantar Public to sum up field work, samples, incentives, response rates, survey implementation, and procedures to increase panel stability.

Compared to the Technical Paper No. 1, which covers the same topics, the Method Reports are more detailed in their fieldwork description and are available for each wave separately. However, they are only available in German.

Documentation: Reference paper

Forschungsnotizen

Johannes Huinink, Josef Brüderl, Bernhard Nauch, Sabine Walper, Laura Castiglioni & Michael Feldhaus

Panel Analysis of Intimate Relationships and Family Dynamics (*pairfam*): Conceptual framework and design

Panel Analysis of Intimate Relationships and Family Dynamics (*pairfam*): konzeptioneller Rahmen und Forschungsdesign

Abstract:
This article introduces the DFG-funded "Panel Analysis of Intimate Relationships and Family Dynamics" (*pairfam*) study, which was initiated to provide an extended empirical basis for advances in family research. Within the context of challenges in couple and family research, we address the major substantive fields covered by the *pairfam* panel: couple dynamics and partnership stability, childbearing, parenting and child development, and intergenerational relationships. Thus, we present the conceptual framework and survey design of *pairfam*. The panel started with about 4,000 respondents (anchors) in each of four birth cohorts: 1991-1995, 1981-1985, and 1971-1975. The panel also includes anchors' partners. From the second wave onwards, parents and children of anchors are included. The policy of *pairfam* with regard to the provision of scientific use files and data distribution are discussed in the concluding remarks.

Key words: children, couples, family research, Germany, panel study, *pairfam*, parenting, partnership

Zusammenfassung:
Dieser Beitrag stellt das deutsche Beziehungs- und Familienpanel (*pairfam*) vor, das eine empirische Basis für Fortschritte in der Beziehungs- und Familienforschung bieten soll. Vor dem Hintergrund aktueller Herausforderungen in der Partnerschafts- und Familienforschung werden Themenschwerpunkte, der konzeptionelle Rahmen und das Design des *pairfam*-Projekts vorgestellt. Inhaltlich fokussiert werden Themen der Partnerschaft, Gründung und Bereinigung von Partnerschaften, Elternschaftsentscheidungen, bei Familiengründung und -erweiterung, Erziehung und Eltern-Kind-Beziehungen sowie Lebenspartnerschaften, Beziehungsnetzwerke. Das Panel begann mit etwa 4.000 Befragten (Anker) in vier Geburtskohorten (geboren 1991-95, 1981-85, 1971-75) sowie auch mit den Partnern der Anker. Ab der zweiten Erhebungswelle werden auch Eltern und Kinder der Anker einbezogen. Am Ende des Beitrags werden einige Aspekte der Distribution der Daten als wissenschaftliche Hinweise diskutiert.

Schlüsselwörter: Erziehung, Familienforschung, Deutschland, Kinder, Partnerschaften, *pairfam*, Partnerschaft

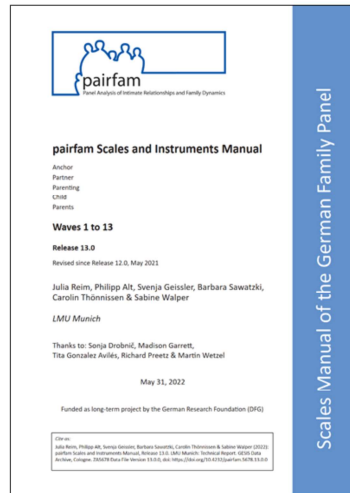
Zeitschrift für Familienforschung, 23. Jahrg., 2011, Heft 1 – Journal of Family Research

- » Huinink et al. (2011). Zeitschrift für Familienforschung
- » Methodological principles
- » Theoretical foundation
- » Reference for citations

The reference paper includes the methodological principles and theoretical foundation of the *pairfam* study.

Please note that this paper should be cited in addition to the data set if you publish your analysis of the *pairfam* data.

Documentation: Scales Manual



- » Suggestions for generating index variables / scales
- » Information on theoretical origin, composition, item characteristics, and reliability of index variables/scales
- » List of internal consistency measures (Cronbach's Alpha) per scale

What is included in the Scales and Instruments Manual?

The Scales and Instruments Manual contains suggestions for generating index variables and scales.

It gives information on the theoretical origin, composition, item characteristics, and reliability of index variables and scales.

Furthermore, it lists Cronbach's Alpha of each scale and offers an extensive bibliography of the different concepts.

The scales are not included in the data; however, syntax files are provided for Stata and SPSS in the Scientific Use File for easy (re-)construction.

Syntax files

- » Scales
- » Generated variables
- » Generated data sets
- » Teaching version
- » Quick Starts

Are there more syntax files available?

In addition to the scales syntax files, we also provide syntax for the generated variables and data sets, as well as files with which you can create a teaching version of the *pairfam* data.

Note that the teaching version can be distributed to your students with the appropriate distribution form.

Furthermore, six Quick Start files are available for Stata users to facilitate the handling of the *pairfam* data. These include suggestions for cross-sectional, longitudinal, and dyadic data matching procedures, constructing samples and weighting, handling missing data, exercising fixed effects panel analysis, and for working with the generated dataset *biopart*.

Next up: Tutorial #10 – Getting started

This concludes the ninth tutorial.

Tutorial number 10 will help you get started with your analysis of the *pairfam* data.