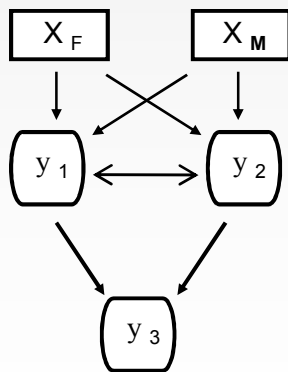


# Relevant factors of the pair bargaining process with regard to the decision to parenthood



Petra Stein  
Sebastian Willen

# Different lines of research in the field of family formation and expansion

- Influence of socio-economic factors
  - **Traditional focus: Woman**

Some studies take into account at least some features of the man, mostly the level of education or information of employment status (*e.g. Kreyenfeld, 2002; Openheimer & Lewin, 1999, Thomson & Hoem, 1998*)
  - **Focus since the last decade: Man**

Research results have shown that occupational-biographical factors influence the transition to fatherhood. Occupational uncertainties such as extended training phases, interruption of occupation and self-employment have a negative influence on the fertility behaviour of the man (*e.g. Schmitt 2003, 2004; Tölke & Diewald 2002, 2003; Tölke 2004, 2005*)

# Different lines of research in the field of family formation and expansion

- Influence of socio-economic factors

- **New focus: Couples**

Studies, which explicitly take a dyadic perspective are rare. Most of them only consider the influence of socio-economic characteristics of both partners on the generative behaviour.

Examples:

Partners occupation and labour market participation (*Gebel & Gisecke, 2009; Kurz, 2005*)

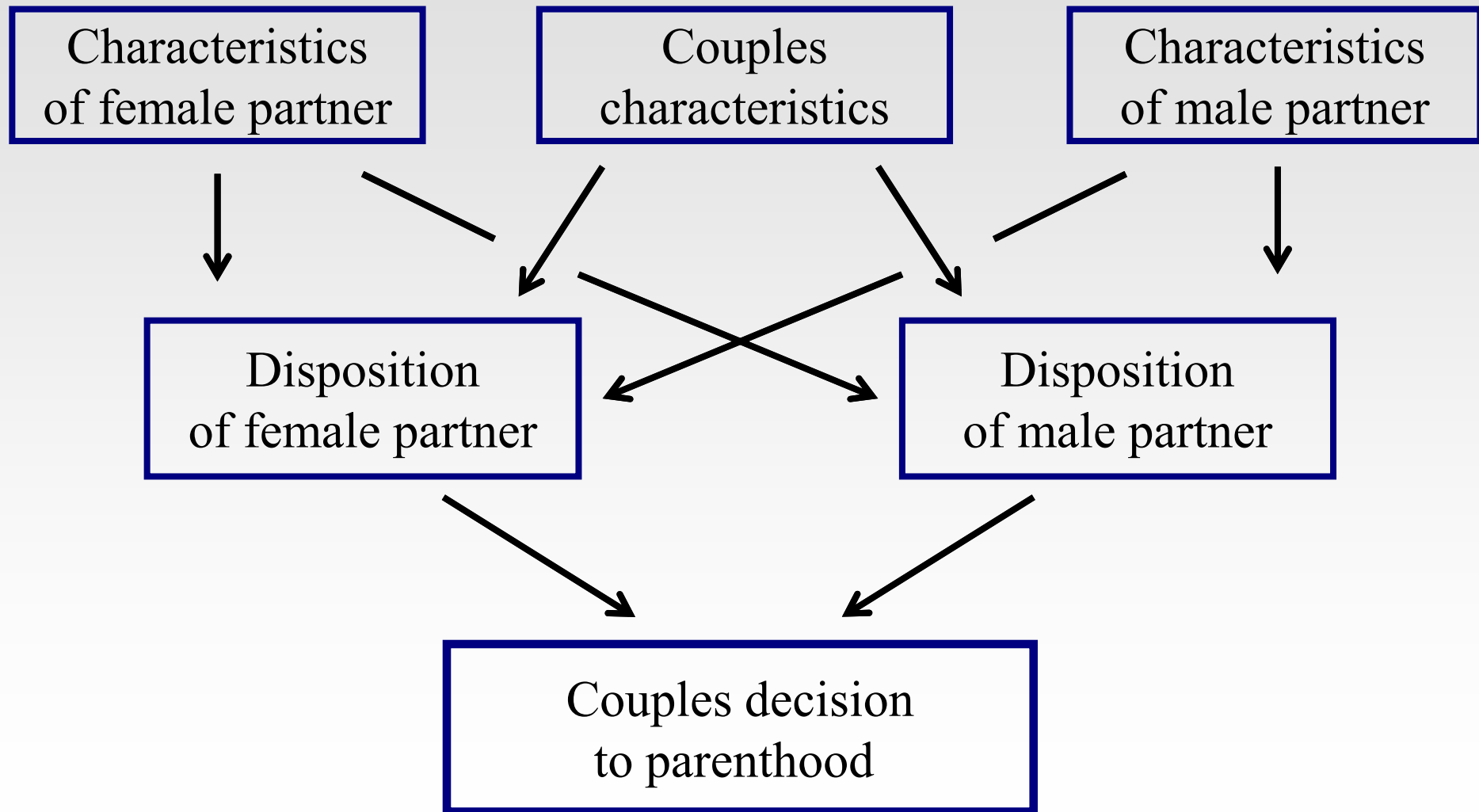
Education and the educational constellation (*Bauer & Jacob, 2009, 2010; Kreyenfeld, 2002; Kreyenfeld & Konietzka, 2008; Wirth, 2007*)

Religiosity (*Croijn, Lifbroer, and Gierveld, 1996*)

# Different lines of research in the field of family formation and expansion

- Fertility desires, intention and preference of both partner
  - Not only socio-economic characteristics are important for decision making towards having children, also the individual dispositions of both partners have to be taken into account to analyse the fertility decision.
    - Older studies shows a higher decision weight of women (*Townes, Beach & Campbell, 1980; Beckman, Aizenber, Forsythe & Day, 1983*)
    - Recent studies found out that both partners expectations influence the probability of a birth. (*in US: Thomson & Hoem, 1998; in the Netherlands: Jansen & Lifbroer, 2006; in Germany: Bauer & Kneip, 2013; Pavetic, 2009; Stein & Pavetic, 2011, 2012, 2013*)

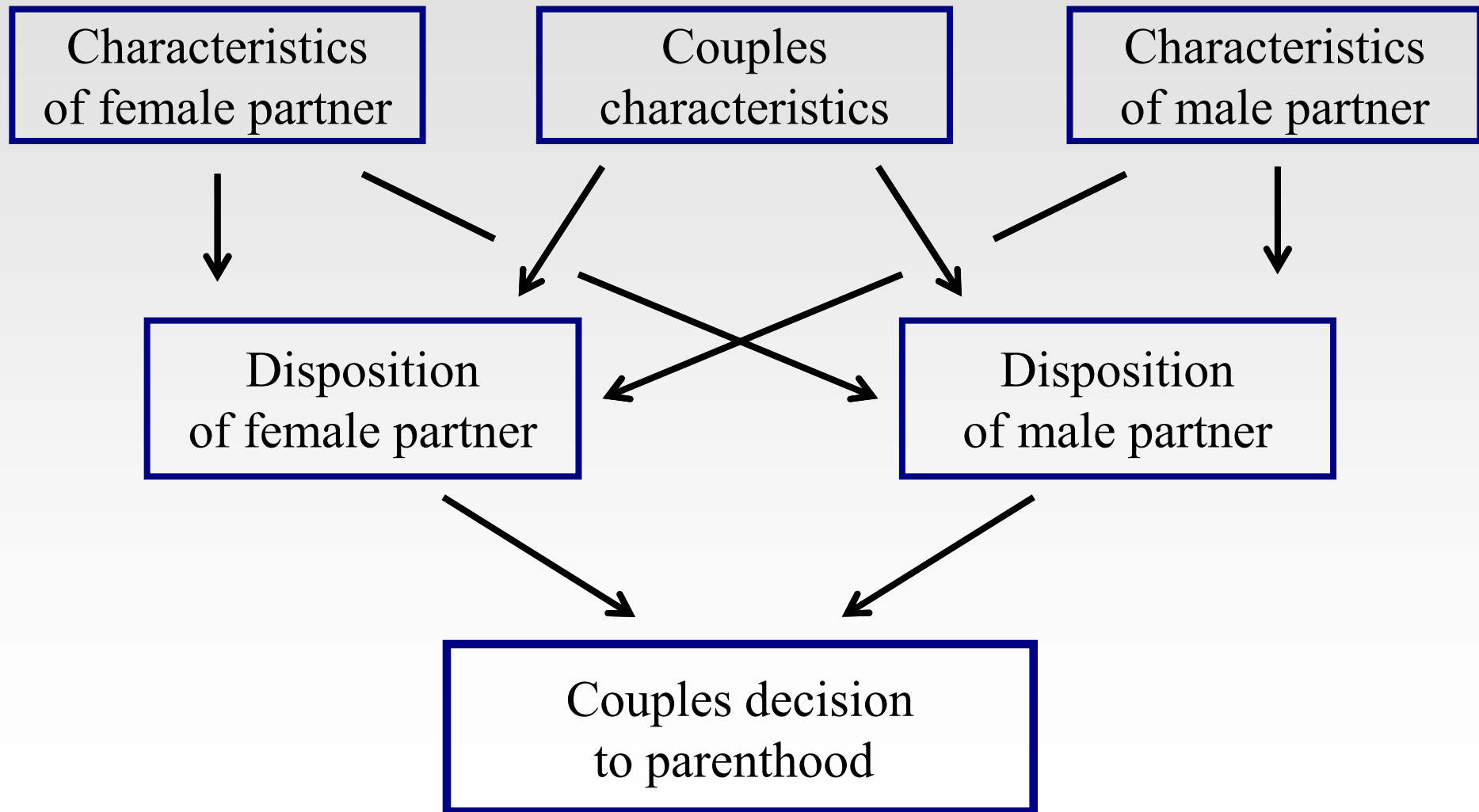
## Focus of research

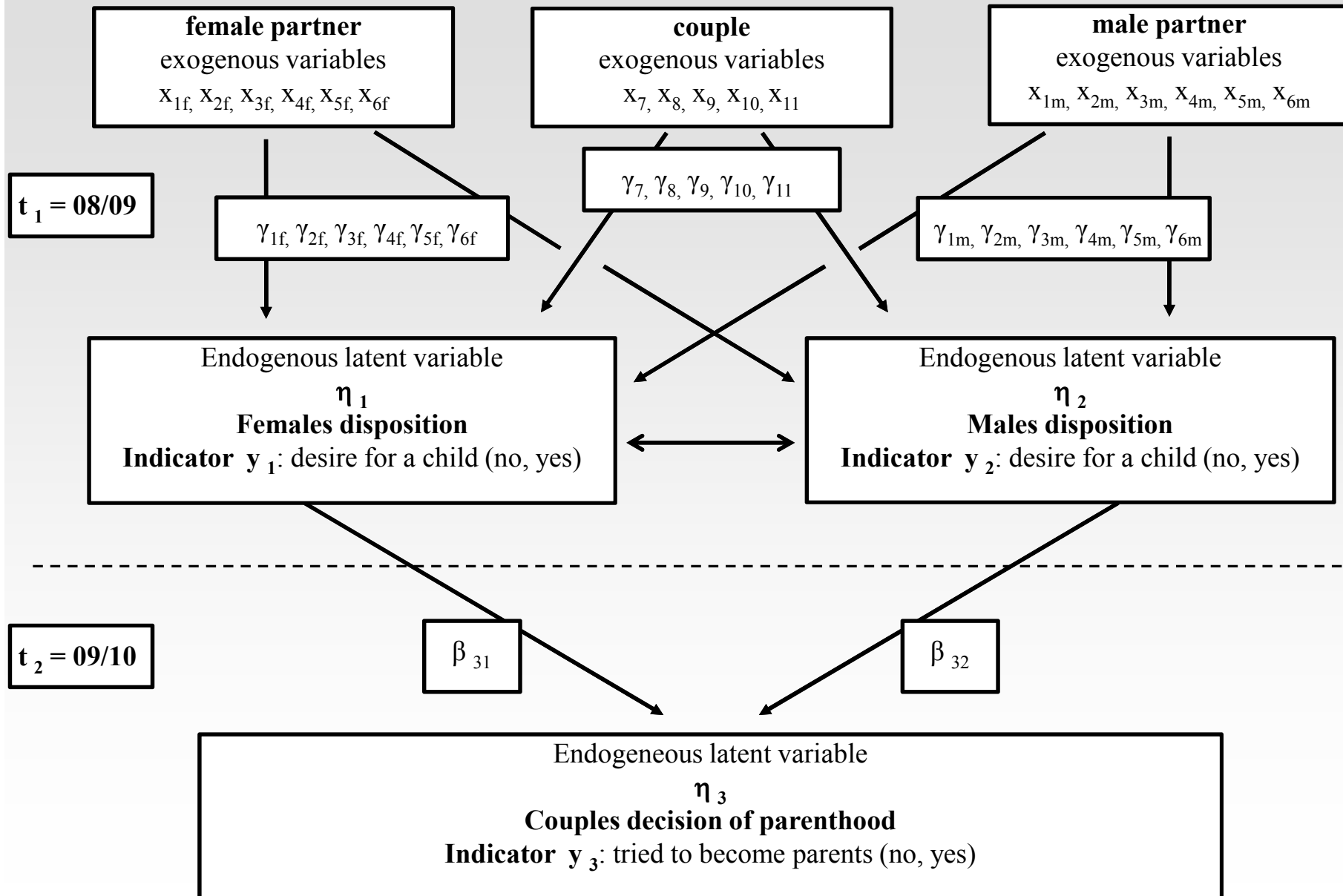


## Statistical problems

- How should the process, that generates agreement or disagreement, be modelled?
- How can this complex process of decision making be statistically modelled?
  - the mutual influence of the partners dispositions
  - the relative influence of both partners on the decision
  - the significance of both partners characteristics for the decision

## Focus of research







# Sample

- Wave 1 & 2 of the actor and partner data sets
- Only heterosexual couples
- Only fertile couples

# Endogenous latent variables

## Females disposition to get a child ( $\eta_1$ )

- By: „Become a mother in the next two years?“  
(0 = no, 1 = yes ; Wave I 08/09)

## Males disposition to get a child ( $\eta_2$ )

- By: „Become a father in the next two years?“  
(0 = no, 1 = yes ; Wave I 08/09)

## Couples decision to get a child ( $\eta_3$ )

- By: „Tried to sire a child / become pregnant within the last twelve months?“  
(0 = no, 1 = yes ; Wave II 09/10)

# Individual exogenous variables

**x<sub>1f</sub>: Females positiv VOC**

(Index composted by 5 Items)

1 = not at all to 5 = very strongly

**x<sub>2f</sub>: Females negativ VOC**

(Index composted by 5 Items)

1 = not at all to 5 = very strongly

**x<sub>1m</sub>: Males positiv VOC**

**x<sub>2m</sub>: Males negativ VOC**

**x<sub>3f</sub>: Females stability of partnership**

(Sum index by 3 Items → min = 0; max = 3)

**x<sub>3m</sub>: Males stability of partnership**

## Individual exogenous variables

**X<sub>4f</sub>: Females working-time**

**X<sub>4m</sub>: Males working-time**

**X<sub>5f</sub>: Female partners education**

(CASMIN Classification)

**X<sub>5m</sub>: Male partners education**

(CASMIN Classification)

**X<sub>6f</sub>: Age of female partner**

**X<sub>6m</sub>: Age of male partner**

## Couple exogenous variables

**x<sub>7</sub>: Flexible childcare options**

(0 = no; 1 = yes)

**x<sub>8</sub>: Couples marital status**

(0 = not married; 1 = married)

**x<sub>9</sub>: Duration of relationship**

**x<sub>10</sub>: Household net income**

**x<sub>11</sub>: Living currently in east germany**

(0 = no; 1 = yes)

## Model estimation

- Multivariate non-linear probit model
- Robust weighted least square estimator (WLSMV)
- Calculated by Mplus 7

Parameter label	Estimation female	Standard error	Estimation male	Standard error
Decision	0.746***	0.138	0.351**	0.127
<b>Individual effects on disposition</b>				
VOC positiv	0.104+	0.062	0.160**	0.057
VOC negativ	-0.148**	0.048	-0.112*	0.055
Stability of partnership	-0.004	0.047	-0.101+	0.056
Working-time	0.005*	0.002	0.001	0.002
Education	0.074***	0.021	0.043*	0.021
Age	-0.002**	0.001	0.000	0.001
<b>Partner effects on disposition</b>				
VOC positiv	0.063	0.055	0.058	0.061
VOC negativ	0.052	0.055	-0.143**	0.051
Stability of partnership	-0.113*	0.052	-0.071	0.050
Working-time	0.002	0.002	0.008***	0.002
Education	0.030	0.020	0.082***	0.022
Age	0.030	0.001	-0.003**	0.001
<b>Couple effects on disposition</b>				
Flexible childcare	0.336***	0.080	0.442***	0.082
Marital	0.400***	0.089	0.329**	0.095
Duration of relationship	-0.005***	0.001	-0.007***	0.001
Income	-0.005	0.008	-0.019*	0.008
East Germany	0.014	0.092	-0.006	0.093

N = 1300; RMSEA = 0.043;  
CFI = 0.987

\*\*\* p < 0.001;

\*\* p < 0.01;

\* p < 0.05;

+ p < 0.1

Parameter label	Estimation female	Standard error	Estimation male	Standard error
Decision	<b>0.746***</b>	0.138	<b>0.351**</b>	0.127
<b>Individual effects on disposition</b>				
VOC positiv	0.104+	0.062	0.160**	0.057
VOC negativ	-0.148**	0.048	-0.112*	0.055
Stability of partnership	-0.004	0.047	-0.101+	0.056
Working-time	0.005*	0.002	0.001	0.002
Education	0.074***	0.021	0.043*	0.021
Age	-0.002**	0.001	0.000	0.001
<b>Partner effects on disposition</b>				
VOC positiv	0.063	0.055	0.058	0.061
VOC negativ	0.052	0.055	-0.143**	0.051
Stability of partnership	-0.113*	0.052	-0.071	0.050
Working-time	0.002	0.002	0.008***	0.002
Education	0.030	0.020	0.082***	0.022
Age	0.030	0.001	-0.003**	0.001
<b>Couple effects on disposition</b>				
Flexible childcare	0.336***	0.080	0.442***	0.082
Marital	0.400***	0.089	0.329**	0.095
Duration of relationship	-0.005***	0.001	-0.007***	0.001
Income	-0.005	0.008	-0.019*	0.008
East Germany	0.014	0.092	-0.006	0.093

N = 1300; RMSEA = 0.043;  
CFI = 0.987

\*\*\* p < 0.001;

\*\* p < 0.01;

\* p < 0.05;

+ p < 0.1



Parameter label	Estimation female	Standard error	Estimation male	Standard error
Decision	0.746***	0.138	0.351**	0.127
<b>Individual effects on disposition</b>				
VOC positiv	0.104+	0.062	0.160**	0.057
VOC negativ	<b>-0.148**</b>	0.048	<b>-0.112*</b>	0.055
Stability of partnership	-0.004	0.047	-0.101+	0.056
Working-time	0.005*	0.002	0.001	0.002
Education	<b>0.074***</b>	0.021	<b>0.043*</b>	0.021
Age	-0.002**	0.001	0.000	0.001
<b>Partner effects on disposition</b>				
VOC positiv	0.063	0.055	0.058	0.061
VOC negativ	0.052	0.055	-0.143**	0.051
Stability of partnership	-0.113*	0.052	-0.071	0.050
Working-time	0.002	0.002	0.008***	0.002
Education	0.030	0.020	0.082***	0.022
Age	0.030	0.001	-0.003**	0.001
<b>Couple effects on disposition</b>				
Flexible childcare	0.336***	0.080	0.442***	0.082
Marital	0.400***	0.089	0.329**	0.095
Duration of relationship	-0.005***	0.001	-0.007***	0.001
Income	-0.005	0.008	-0.019*	0.008
East Germany	0.014	0.092	-0.006	0.093

N = 1300; RMSEA = 0.043;  
CFI = 0.987

\*\*\* p < 0.001;  
\*\* p < 0.01;  
\* p < 0.05;  
+ p < 0.1

Parameter label	Estimation female	Standard error	Estimation male	Standard error
Decision	0.746***	0.138	0.351**	0.127
<b>Individual effects on disposition</b>				
VOC positiv	0.104+	0.062	0.160**	0.057
VOC negativ	-0.148**	0.048	-0.112*	0.055
Stability of partnership	-0.004	0.047	-0.101+	0.056
Working-time	<b>0.005*</b>	0.002	<b>0.001</b>	0.002
Education	0.074***	0.021	0.043*	0.021
Age	<b>-0.002**</b>	0.001	<b>0.000</b>	0.001
<b>Partner effects on disposition</b>				
VOC positiv	0.063	0.055	0.058	0.061
VOC negativ	0.052	0.055	-0.143**	0.051
Stability of partnership	-0.113*	0.052	-0.071	0.050
Working-time	0.002	0.002	0.008***	0.002
Education	0.030	0.020	0.082***	0.022
Age	0.030	0.001	-0.003**	0.001
<b>Couple effects on disposition</b>				
Flexible childcare	0.336***	0.080	0.442***	0.082
Marital	0.400***	0.089	0.329**	0.095
Duration of relationship	-0.005***	0.001	-0.007***	0.001
Income	-0.005	0.008	-0.019*	0.008
East Germany	0.014	0.092	-0.006	0.093

N = 1300; RMSEA = 0.043;  
CFI = 0.987

\*\*\* p < 0.001;

\*\* p < 0.01;

\* p < 0.05;

+ p < 0.1

Parameter label	Estimation female	Standard error	Estimation male	Standard error
Decision	0.746***	0.138	0.351**	0.127
<b>Individual effects on disposition</b>				
VOC positiv	0.104+	0.062	0.160**	0.057
VOC negativ	-0.148**	0.048	-0.112*	0.055
Stability of partnership	-0.004	0.047	-0.101+	0.056
Working-time	0.005*	0.002	0.001	0.002
Education	0.074***	0.021	0.043*	0.021
Age	-0.002**	0.001	0.000	0.001
<b>Partner effects on disposition</b>				
VOC positiv	0.063	0.055	0.058	0.061
VOC negativ	0.052	0.055	<b>-0.143**</b>	0.051
Stability of partnership	<b>-0.113*</b>	0.052	-0.071	0.050
Working-time	0.002	0.002	<b>0.008***</b>	0.002
Education	0.030	0.020	<b>0.082***</b>	0.022
Age	0.030	0.001	<b>-0.003**</b>	0.001
<b>Couple effects on disposition</b>				
Flexible childcare	0.336***	0.080	0.442***	0.082
Marital	0.400***	0.089	0.329**	0.095
Duration of relationship	-0.005***	0.001	-0.007***	0.001
Income	-0.005	0.008	-0.019*	0.008
East Germany	0.014	0.092	-0.006	0.093

N = 1300; RMSEA = 0.043;  
CFI = 0.987

\*\*\* p < 0.001;  
\*\* p < 0.01;  
\* p < 0.05;  
+ p < 0.1

Parameter label	Estimation female	Standard error	Estimation male	Standard error
Decision	0.746***	0.138	0.351**	0.127
<b>Individual effects on disposition</b>				
VOC positiv	0.104+	0.062	0.160**	0.057
VOC negativ	-0.148**	0.048	-0.112*	0.055
Stability of partnership	-0.004	0.047	-0.101+	0.056
Working-time	0.005*	0.002	0.001	0.002
Education	0.074***	0.021	0.043*	0.021
Age	-0.002**	0.001	0.000	0.001
<b>Partner effects on disposition</b>				
VOC positiv	0.063	0.055	0.058	0.061
VOC negativ	0.052	0.055	-0.143**	0.051
Stability of partnership	-0.113*	0.052	-0.071	0.050
Working-time	0.002	0.002	0.008***	0.002
Education	0.030	0.020	0.082***	0.022
Age	0.030	0.001	-0.003**	0.001
<b>Couple effects on disposition</b>				
Flexible childcare	<b>0.336***</b>	0.080	<b>0.442***</b>	0.082
Marital	<b>0.400***</b>	0.089	<b>0.329**</b>	0.095
Duration of relationship	<b>-0.005***</b>	0.001	<b>-0.007***</b>	0.001
Income	-0.005	0.008	-0.019*	0.008
East Germany	0.014	0.092	-0.006	0.093

N = 1300; RMSEA = 0.043;  
CFI = 0.987

\*\*\* p < 0.001;  
\*\* p < 0.01;  
\* p < 0.05;  
+ p < 0.1

Parameter label	Estimation female	Standard error	Estimation male	Standard error
Decision	0.746***	0.138	0.351**	0.127
<b>Individual effects on disposition</b>				
VOC positiv	0.104+	0.062	0.160**	0.057
VOC negativ	-0.148**	0.048	-0.112*	0.055
Stability of partnership	-0.004	0.047	-0.101+	0.056
Working-time	0.005*	0.002	0.001	0.002
Education	0.074***	0.021	0.043*	0.021
Age	-0.002**	0.001	0.000	0.001
<b>Partner effects on disposition</b>				
VOC positiv	0.063	0.055	0.058	0.061
VOC negativ	0.052	0.055	-0.143**	0.051
Stability of partnership	-0.113*	0.052	-0.071	0.050
Working-time	0.002	0.002	0.008***	0.002
Education	0.030	0.020	0.082***	0.022
Age	0.030	0.001	-0.003**	0.001
<b>Couple effects on disposition</b>				
Flexible childcare	0.336***	0.080	0.442***	0.082
Marital	0.400***	0.089	0.329**	0.095
Duration of relationship	-0.005***	0.001	-0.007***	0.001
Income	-0.005	0.008	<b>-0.019*</b>	0.008
East Germany	<b>0.014</b>	0.092	<b>-0.006</b>	0.093

N = 1300; RMSEA = 0.043;  
CFI = 0.987

\*\*\* p < 0.001;

\*\* p < 0.01;

\* p < 0.05;

+ p < 0.1

## Effect of the pair constellation

- Hypergenous couples
  - male is higher educated
- Hypogenous couples
  - female is higher educated

Parameter label	Estimation hyper	Standard Error	Estimation hypo	Standard Error
Decision	0.430*	0.211	3.801*	1.739
<b>Individual effects on disposition</b>				
VOC positiv	0.137	0.115	0.142	0.106
VOC negativ	-0.087	0.089	-0.268**	0.086
Stability of partnership	-0.003	0.088	0.107	0.080
Working-time	0.009*	0.004	0.012**	0.004
Education	0.023	0.057	0.077	0.056
Age	0.001	0.002	-0.003	0.002
<b>Partner effects on disposition</b>				
VOC positiv	0.096	0.100	0.111	0.099
VOC negativ	0.059	0.097	0.064	0.093
Stability of partnership	-0.081	0.097	-0.234*	0.092
Working-time	0.004	0.005	0.002	0.004
Education	0.045	0.062	0.010	0.054
Age	-0.004*	0.002	-0.001	0.001
<b>Couple effects on disposition</b>				
Flexible childcare	0.283+	0.147	0.546***	0.135
Marital	0.359*	0.182	0.481**	0.145
Duration of relationship	-0.003*	0.001	-0.006***	0.001
Income	-0.002	0.015	-0.008	0.015
East Germany	-0.252	0.205	-0.074	0.155

## Female Partner

### Hypergenous Couples:

N = 390; RMSEA = 0.021;  
CFI = 0.997

### Hypogenous Couples:

N = 419; RMSEA = 0.060;  
CFI = 0.979

\*\*\* p < 0.001;

\*\* p < 0.01;

\* p < 0.05;

+ p < 0.1

Parameter label	Estimation hyper	Standard Error	Estimation hypo	Standard Error
Decision	<b>0.430*</b>	0.211	<b>3.801*</b>	1.739
<b>Individual effects on disposition</b>				
VOC positiv	0.137	0.115	0.142	0.106
VOC negativ	-0.087	0.089	-0.268**	0.086
Stability of partnership	-0.003	0.088	0.107	0.080
Working-time	0.009*	0.004	0.012**	0.004
Education	0.023	0.057	0.077	0.056
Age	0.001	0.002	-0.003	0.002
<b>Partner effects on disposition</b>				
VOC positiv	0.096	0.100	0.111	0.099
VOC negativ	0.059	0.097	0.064	0.093
Stability of partnership	-0.081	0.097	-0.234*	0.092
Working-time	0.004	0.005	0.002	0.004
Education	0.045	0.062	0.010	0.054
Age	-0.004*	0.002	-0.001	0.001
<b>Couple effects on disposition</b>				
Flexible childcare	0.283+	0.147	0.546***	0.135
Marital	0.359*	0.182	0.481**	0.145
Duration of relationship	-0.003*	0.001	-0.006***	0.001
Income	-0.002	0.015	-0.008	0.015
East Germany	-0.252	0.205	-0.074	0.155

## Female Partner

### Hypergenous Couples:

N = 390; RMSEA = 0.021;  
CFI = 0.997

### Hypogenous Couples:

N = 419; RMSEA = 0.060;  
CFI = 0.979

\*\*\* p < 0.001;

\*\* p < 0.01;

\* p < 0.05;

+ p < 0.1



Parameter label	Estimation hyper	Standard Error	Estimation hypo	Standard Error
Decision	0.430*	0.211	3.801*	1.739
<b>Individual effects on disposition</b>				
VOC positiv	0.137	0.115	0.142	0.106
VOC negativ	-0.087	0.089	<b>-0.268**</b>	0.086
Stability of partnership	-0.003	0.088	0.107	0.080
Working-time	<b>0.009*</b>	0.004	<b>0.012**</b>	0.004
Education	0.023	0.057	0.077	0.056
Age	0.001	0.002	-0.003	0.002
<b>Partner effects on disposition</b>				
VOC positiv	0.096	0.100	0.111	0.099
VOC negativ	0.059	0.097	0.064	0.093
Stability of partnership	-0.081	0.097	-0.234*	0.092
Working-time	0.004	0.005	0.002	0.004
Education	0.045	0.062	0.010	0.054
Age	-0.004*	0.002	-0.001	0.001
<b>Couple effects on disposition</b>				
Flexible childcare	0.283+	0.147	0.546***	0.135
Marital	0.359*	0.182	0.481**	0.145
Duration of relationship	-0.003*	0.001	-0.006***	0.001
Income	-0.002	0.015	-0.008	0.015
East Germany	-0.252	0.205	-0.074	0.155

## Female Partner

### Hypergenous Couples:

N = 390; RMSEA = 0.021;  
CFI = 0.997

### Hypogenous Couples:

N = 419; RMSEA = 0.060;  
CFI = 0.979

\*\*\* p < 0.001;

\*\* p < 0.01;

\* p < 0.05;

+ p < 0.1

Parameter label	Estimation hyper	Standard Error	Estimation hypo	Standard Error
Decision	0.430*	0.211	3.801*	1.739
<b>Individual effects on disposition</b>				
VOC positiv	0.137	0.115	0.142	0.106
VOC negativ	-0.087	0.089	-0.268**	0.086
Stability of partnership	-0.003	0.088	0.107	0.080
Working-time	0.009*	0.004	0.012**	0.004
Education	0.023	0.057	0.077	0.056
Age	0.001	0.002	-0.003	0.002
<b>Partner effects on disposition</b>				
VOC positiv	0.096	0.100	0.111	0.099
VOC negativ	0.059	0.097	0.064	0.093
Stability of partnership	-0.081	0.097	<b>-0.234*</b>	0.092
Working-time	0.004	0.005	0.002	0.004
Education	0.045	0.062	0.010	0.054
Age	<b>-0.004*</b>	0.002	-0.001	0.001
<b>Couple effects on disposition</b>				
Flexible childcare	0.283+	0.147	0.546***	0.135
Marital	0.359*	0.182	0.481**	0.145
Duration of relationship	-0.003*	0.001	-0.006***	0.001
Income	-0.002	0.015	-0.008	0.015
East Germany	-0.252	0.205	-0.074	0.155

## Female Partner

### Hypergenous Couples:

N = 390; RMSEA = 0.021;  
CFI = 0.997

### Hypogenous Couples:

N = 419; RMSEA = 0.060;  
CFI = 0.979

\*\*\* p < 0.001;

\*\* p < 0.01;

\* p < 0.05;

+ p < 0.1

Parameter label	Estimation hyper	Standard Error	Estimation hypo	Standard Error
Decision	0.430*	0.211	3.801*	1.739
<b>Individual effects on disposition</b>				
VOC positiv	0.137	0.115	0.142	0.106
VOC negativ	-0.087	0.089	-0.268**	0.086
Stability of partnership	-0.003	0.088	0.107	0.080
Working-time	0.009*	0.004	0.012**	0.004
Education	0.023	0.057	0.077	0.056
Age	0.001	0.002	-0.003	0.002
<b>Partner effects on disposition</b>				
VOC positiv	0.096	0.100	0.111	0.099
VOC negativ	0.059	0.097	0.064	0.093
Stability of partnership	-0.081	0.097	-0.234*	0.092
Working-time	0.004	0.005	0.002	0.004
Education	0.045	0.062	0.010	0.054
Age	-0.004*	0.002	-0.001	0.001
<b>Couple effects on disposition</b>				
Flexible childcare	<b>0.283+</b>	0.147	<b>0.546***</b>	0.135
Marital	0.359*	0.182	0.481**	0.145
Duration of relationship	-0.003*	0.001	-0.006***	0.001
Income	<b>-0.002</b>	0.015	<b>-0.008</b>	0.015
East Germany	<b>-0.252</b>	0.205	<b>-0.074</b>	0.155

## Female Partner

### Hypergenous Couples:

N = 390; RMSEA = 0.021;  
CFI = 0.997

### Hypogenous Couples:

N = 419; RMSEA = 0.060;  
CFI = 0.979

\*\*\* p < 0.001;

\*\* p < 0.01;

\* p < 0.05;

+ p < 0.1

Parameter label	Estimation hyper	Standard error	Estimation hypo	Standard error
Decision	<b>0.985***</b>	0.230	<b>-2.378+</b>	1.372
<b>Individual effects on disposition</b>				
VOC positiv	0.172+	0.104	0.163	0.105
VOC negativ	0.002	0.098	0.114	0.096
Stability of partnership	-0.143	0.096	-0.283**	0.080
Working-time	0.005	0.004	-0.001	0.004
Education	0.039	0.063	0.006	0.055
Age	0.000	0.002	0.000	0.001
<b>Partner effects on disposition</b>				
VOC positiv	0.006	0.116	0.222*	0.113
VOC negativ	-0.102	0.091	-0.335***	0.093
Stability of partnership	-0.097	0.090	0.137	0.092
Working-time	0.007+	0.004	0.018***	0.004
Education	0.013	0.055	0.088	0.062
Age	-0.002	0.002	-0.003+	0.002
<b>Couple effects on disposition</b>				
Flexible childcare	0.335*	0.146	0.551***	0.145
Marital	0.544**	0.186	0.289+	0.169
Duration of relationship	-0.007***	0.002	-0.005**	0.001
Income	-0.004	0.013	-0.021	0.016
East Germany	-0.017	0.189	-0.080	0.168

Male Partner

Hypergenous Couples:

N = 390; RMSEA = 0.021;  
CFI = 0.997

Hypogenous Couples:

N = 419; RMSEA = 0.060;  
CFI = 0.979

\*\*\* p < 0.001;

\*\* p < 0.01;

\* p < 0.05;

+ p < 0.1

Parameter label	Estimation hyper	Standard error	Estimation hypo	Standard error
Decision	0.985***	0.230	-2.378+	1.372
<b>Individual effects on disposition</b>				
VOC positiv	0.172+	0.104	0.163	0.105
VOC negativ	0.002	0.098	0.114	0.096
Stability of partnership	-0.143	0.096	<b>-0.283**</b>	0.080
Working-time	0.005	0.004	-0.001	0.004
Education	0.039	0.063	0.006	0.055
Age	0.000	0.002	0.000	0.001
<b>Partner effects on disposition</b>				
VOC positiv	0.006	0.116	0.222*	0.113
VOC negativ	-0.102	0.091	-0.335***	0.093
Stability of partnership	-0.097	0.090	0.137	0.092
Working-time	0.007+	0.004	0.018***	0.004
Education	0.013	0.055	0.088	0.062
Age	-0.002	0.002	-0.003+	0.002
<b>Couple effects on disposition</b>				
Flexible childcare	0.335*	0.146	0.551***	0.145
Marital	0.544**	0.186	0.289+	0.169
Duration of relationship	-0.007***	0.002	-0.005**	0.001
Income	-0.004	0.013	-0.021	0.016
East Germany	-0.017	0.189	-0.080	0.168

Male Partner

Hypergenous Couples:

N = 390; RMSEA = 0.021;  
CFI = 0.997

Hypogenous Couples:

N = 419; RMSEA = 0.060;  
CFI = 0.979

\*\*\* p < 0.001;

\*\* p < 0.01;

\* p < 0.05;

+ p < 0.1

Parameter label	Estimation hyper	Standard error	Estimation hypo	Standard error
Decision	0.985***	0.230	-2.378+	1.372
<b>Individual effects on disposition</b>				
VOC positiv	0.172+	0.104	0.163	0.105
VOC negativ	0.002	0.098	0.114	0.096
Stability of partnership	-0.143	0.096	-0.283**	0.080
Working-time	0.005	0.004	-0.001	0.004
Education	0.039	0.063	0.006	0.055
Age	0.000	0.002	0.000	0.001
<b>Partner effects on disposition</b>				
VOC positiv	0.006	0.116	<b>0.222*</b>	0.113
VOC negativ	-0.102	0.091	<b>-0.335***</b>	0.093
Stability of partnership	-0.097	0.090	0.137	0.092
Working-time	<b>0.007+</b>	0.004	<b>0.018***</b>	0.004
Education	0.013	0.055	0.088	0.062
Age	-0.002	0.002	-0.003+	0.002
<b>Couple effects on disposition</b>				
Flexible childcare	0.335*	0.146	0.551***	0.145
Marital	0.544**	0.186	0.289+	0.169
Duration of relationship	-0.007***	0.002	-0.005**	0.001
Income	-0.004	0.013	-0.021	0.016
East Germany	-0.017	0.189	-0.080	0.168

### Male Partner

#### Hypergenous Couples:

N = 390; RMSEA = 0.021;  
CFI = 0.997

#### Hypogenous Couples:

N = 419; RMSEA = 0.060;  
CFI = 0.979

\*\*\* p < 0.001;

\*\* p < 0.01;

\* p < 0.05;

+ p < 0.1

Parameter label	Estimation hyper	Standard error	Estimation hypo	Standard error
Decision	0.985***	0.230	-2.378+	1.372
<b>Individual effects on disposition</b>				
VOC positiv	0.172+	0.104	0.163	0.105
VOC negativ	0.002	0.098	0.114	0.096
Stability of partnership	-0.143	0.096	-0.283**	0.080
Working-time	0.005	0.004	-0.001	0.004
Education	0.039	0.063	0.006	0.055
Age	0.000	0.002	0.000	0.001
<b>Partner effects on disposition</b>				
VOC positiv	0.006	0.116	0.222*	0.113
VOC negativ	-0.102	0.091	-0.335***	0.093
Stability of partnership	-0.097	0.090	0.137	0.092
Working-time	0.007+	0.004	0.018***	0.004
Education	0.013	0.055	0.088	0.062
Age	-0.002	0.002	-0.003+	0.002
<b>Couple effects on disposition</b>				
Flexible childcare	0.335*	0.146	0.551***	0.145
Marital	0.544**	0.186	0.289+	0.169
Duration of relationship	-0.007***	0.002	-0.005**	0.001
Income	<b>-0.004</b>	0.013	<b>-0.021</b>	0.016
East Germany	<b>-0.017</b>	0.189	<b>-0.080</b>	0.168

Male Partner

Hypergenous Couples:

N = 390; RMSEA = 0.021;  
CFI = 0.997

Hypogenous Couples:

N = 419; RMSEA = 0.060;  
CFI = 0.979

\*\*\* p < 0.001;

\*\* p < 0.01;

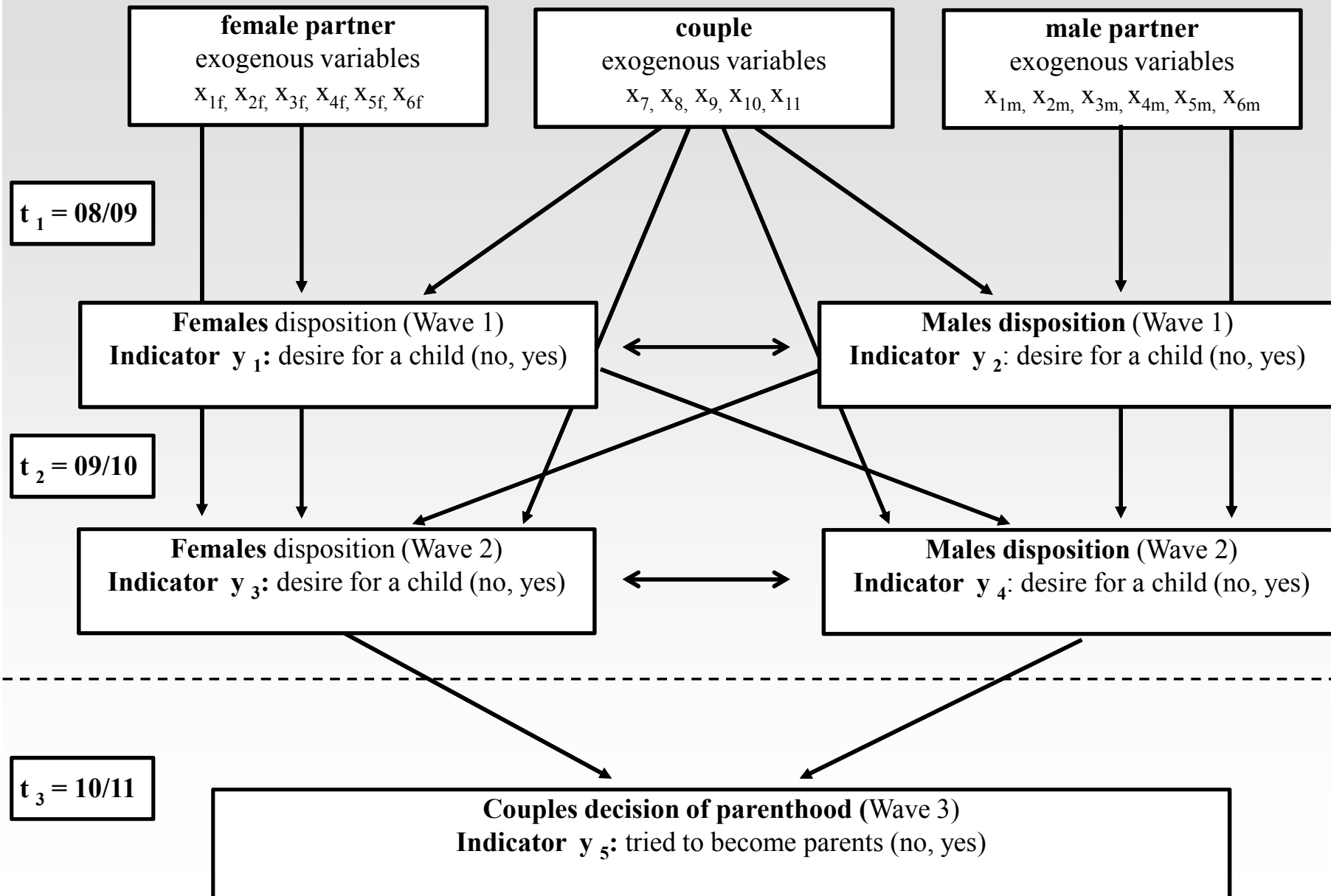
\* p < 0.05;

+ p < 0.1

## Model extension

- Decision of parenthood may oscillate
- External influences could change
- Consequential:
  - modelling the decision of parenthood in a multi wave model





Parameter label	Estimation female	Standard error	Estimation male	Standard error
Decision	0.581*	0.244	0.451*	0.201
<b>Individual effects on disposition wave 2</b>				
Disposition wave 1	0.887***	0.141	0.679***	0.140
Working-time	0.009+	0.005	0.002	0.007
Stability of partnership	0.013	0.117	-0.142	0.140
<b>Partner effect on disposition wave 2</b>				
Disposition wave 1	0.233+	0.126	0.594***	0.145
<b>Individual effects on disposition wave 1</b>				
VOC positiv	0.131	0.090	0.239**	0.086
VOC negativ	-0.247***	0.071	-0.095	0.082
Stability of partnership	-0.069	0.076	-0.003	0.094
Working-time	0.017***	0.004	0.002	0.004
Education	0.152***	0.032	0.032	0.034
Age	-0.005***	0.001	0.000	0.001
<b>Couple effects on disposition wave 1</b>				
Flexible childcare	0.325**	0.104	0.249*	0.105
Marital	0.289*	0.116	0.260*	0.121
Duration of relationship	-0.006***	0.001	-0.007***	0.001
Income	-0.015	0.013	-0.028*	0.013
East Germany	-0.154	0.125	-0.018	0.131
<b>Disposition correlation 2</b>	0.452***		0.079	
<b>Disposition correlation 1</b>	0.838***		0.025	

N = 808; RMSEA = 0.043;  
CFI = 0.969

\*\*\* p < 0.001;

\*\* p < 0.01;

\* p < 0.05;

+ p < 0.1

Parameter label	Estimation female	Standard error	Estimation male	Standard error
Decision	0.581*	0.244	0.451*	0.201
<b>Individual effects on disposition wave 2</b>				
Disposition wave 1	0.887***	0.141	0.679***	0.140
Working-time	0.009+	0.005	0.002	0.007
Stability of partnership	0.013	0.117	-0.142	0.140
<b>Partner effect on disposition wave 2</b>				
Disposition wave 1	0.233+	0.126	0.594***	0.145
<b>Individual effects on disposition wave 1</b>				
VOC positiv	0.131	0.090	0.239**	0.086
VOC negativ	-0.247***	0.071	-0.095	0.082
Stability of partnership	-0.069	0.076	-0.003	0.094
Working-time	0.017***	0.004	0.002	0.004
Education	0.152***	0.032	0.032	0.034
Age	-0.005***	0.001	0.000	0.001
<b>Couple effects on disposition wave 1</b>				
Flexible childcare	0.325**	0.104	0.249*	0.105
Marital	0.289*	0.116	0.260*	0.121
Duration of relationship	-0.006***	0.001	-0.007***	0.001
Income	-0.015	0.013	-0.028*	0.013
East Germany	-0.154	0.125	-0.018	0.131
<b>Disposition correlation 2</b>	0.452***		0.079	
<b>Disposition correlation 1</b>	0.838***		0.025	

N = 808; RMSEA = 0.043;  
CFI = 0.969

\*\*\* p < 0.001;

\*\* p < 0.01;

\* p < 0.05;

+ p < 0.1

Parameter label	Estimation female	Standard error	Estimation male	Standard error
Decision	0.581*	0.244	0.451*	0.201
<b>Individual effects on disposition wave 2</b>				
Disposition wave 1	<b>0.887***</b>	0.141	<b>0.679***</b>	0.140
Working-time	0.009+	0.005	0.002	0.007
Stability of partnership	0.013	0.117	-0.142	0.140
<b>Partner effect on disposition wave 2</b>				
Disposition wave 1	0.233+	0.126	0.594***	0.145
<b>Individual effects on disposition wave 1</b>				
VOC positiv	0.131	0.090	0.239**	0.086
VOC negativ	-0.247***	0.071	-0.095	0.082
Stability of partnership	-0.069	0.076	-0.003	0.094
Working-time	0.017***	0.004	0.002	0.004
Education	0.152***	0.032	0.032	0.034
Age	-0.005***	0.001	0.000	0.001
<b>Couple effects on disposition wave 1</b>				
Flexible childcare	0.325**	0.104	0.249*	0.105
Marital	0.289*	0.116	0.260*	0.121
Duration of relationship	-0.006***	0.001	-0.007***	0.001
Income	-0.015	0.013	-0.028*	0.013
East Germany	-0.154	0.125	-0.018	0.131
<b>Disposition correlation 2</b>	0.452***		0.079	
<b>Disposition correlation 1</b>	0.838***		0.025	

N = 808; RMSEA = 0.043;  
CFI = 0.969

\*\*\* p < 0.001;

\*\* p < 0.01;

\* p < 0.05;

+ p < 0.1

Parameter label	Estimation female	Standard error	Estimation male	Standard error
Decision	0.581*	0.244	0.451*	0.201
<b>Individual effects on disposition wave 2</b>				
Disposition wave 1	0.887***	0.141	0.679***	0.140
Working-time	0.009+	0.005	0.002	0.007
Stability of partnership	0.013	0.117	-0.142	0.140
<b>Partner effect on disposition wave 2</b>				
Disposition wave 1	<b>0.233+</b>	0.126	<b>0.594***</b>	0.145
<b>Individual effects on disposition wave 1</b>				
VOC positiv	0.131	0.090	0.239**	0.086
VOC negativ	-0.247***	0.071	-0.095	0.082
Stability of partnership	-0.069	0.076	-0.003	0.094
Working-time	0.017***	0.004	0.002	0.004
Education	0.152***	0.032	0.032	0.034
Age	-0.005***	0.001	0.000	0.001
<b>Couple effects on disposition wave 1</b>				
Flexible childcare	0.325**	0.104	0.249*	0.105
Marital	0.289*	0.116	0.260*	0.121
Duration of relationship	-0.006***	0.001	-0.007***	0.001
Income	-0.015	0.013	-0.028*	0.013
East Germany	-0.154	0.125	-0.018	0.131
<b>Disposition correlation 2</b>	0.452***		0.079	
<b>Disposition correlation 1</b>	0.838***		0.025	

N = 808; RMSEA = 0.043;  
CFI = 0.969

\*\*\* p < 0.001;

\*\* p < 0.01;

\* p < 0.05;

+ p < 0.1

Parameter label	Estimation female	Standard error	Estimation male	Standard error
Decision	0.581*	0.244	0.451*	0.201
<b>Individual effects on disposition wave 2</b>				
Disposition wave 1	0.887***	0.141	0.679***	0.140
Working-time	0.009+	0.005	0.002	0.007
Stability of partnership	0.013	0.117	-0.142	0.140
<b>Partner effect on disposition wave 2</b>				
Disposition wave 1	0.233+	0.126	0.594***	0.145
<b>Individual effects on disposition wave 1</b>				
VOC positiv	0.131	0.090	<b>0.239**</b>	0.086
VOC negativ	<b>-0.247***</b>	0.071	-0.095	0.082
Stability of partnership	-0.069	0.076	-0.003	0.094
Working-time	<b>0.017***</b>	0.004	0.002	0.004
Education	<b>0.152***</b>	0.032	0.032	0.034
Age	<b>-0.005***</b>	0.001	0.000	0.001
<b>Couple effects on disposition wave 1</b>				
Flexible childcare	0.325**	0.104	0.249*	0.105
Marital	0.289*	0.116	0.260*	0.121
Duration of relationship	-0.006***	0.001	-0.007***	0.001
Income	-0.015	0.013	-0.028*	0.013
East Germany	-0.154	0.125	-0.018	0.131
<b>Disposition correlation 2</b>	0.452***		0.079	
<b>Disposition correlation 1</b>	0.838***		0.025	

N = 808; RMSEA = 0.043;  
CFI = 0.969

\*\*\* p < 0.001;

\*\* p < 0.01;

\* p < 0.05;

+ p < 0.1

Parameter label	Estimation female	Standard error	Estimation male	Standard error
Decision	0.581*	0.244	0.451*	0.201
<b>Individual effects on disposition wave 2</b>				
Disposition wave 1	0.887***	0.141	0.679***	0.140
Working-time	<b>0.009+</b>	0.005	0.002	0.007
Stability of partnership	0.013	0.117	<b>-0.142</b>	0.140
<b>Partner effect on disposition wave 2</b>				
Disposition wave 1	0.233+	0.126	0.594***	0.145
<b>Individual effects on disposition wave 1</b>				
VOC positiv	0.131	0.090	0.239**	0.086
VOC negativ	-0.247***	0.071	-0.095	0.082
Stability of partnership	-0.069	0.076	<b>-0.003</b>	0.094
Working-time	<b>0.017***</b>	0.004	0.002	0.004
Education	0.152***	0.032	0.032	0.034
Age	-0.005***	0.001	0.000	0.001
<b>Couple effects on disposition wave 1</b>				
Flexible childcare	0.325**	0.104	0.249*	0.105
Marital	0.289*	0.116	0.260*	0.121
Duration of relationship	-0.006***	0.001	-0.007***	0.001
Income	-0.015	0.013	-0.028*	0.013
East Germany	-0.154	0.125	-0.018	0.131
<b>Disposition correlation 2</b>	0.452***		0.079	
<b>Disposition correlation 1</b>	0.838***		0.025	

N = 808; RMSEA = 0.043;  
CFI = 0.969

\*\*\* p < 0.001;

\*\* p < 0.01;

\* p < 0.05;

+ p < 0.1

Parameter label	Estimation female	Standard error	Estimation male	Standard error
Decision	0.581*	0.244	0.451*	0.201
<b>Individual effects on disposition wave 2</b>				
Disposition wave 1	0.887***	0.141	0.679***	0.140
Working-time	0.009+	0.005	0.002	0.007
Stability of partnership	0.013	0.117	-0.142	0.140
<b>Partner effect on disposition wave 2</b>				
Disposition wave 1	0.233+	0.126	0.594***	0.145
<b>Individual effects on disposition wave 1</b>				
VOC positiv	0.131	0.090	0.239**	0.086
VOC negativ	-0.247***	0.071	-0.095	0.082
Stability of partnership	-0.069	0.076	-0.003	0.094
Working-time	0.017***	0.004	0.002	0.004
Education	0.152***	0.032	0.032	0.034
Age	-0.005***	0.001	0.000	0.001
<b>Couple effects on disposition wave 1</b>				
Flexible childcare	0.325**	0.104	0.249*	0.105
Marital	0.289*	0.116	0.260*	0.121
Duration of relationship	-0.006***	0.001	-0.007***	0.001
Income	-0.015	0.013	<b>-0.028*</b>	0.013
East Germany	<b>-0.154</b>	0.125	<b>-0.018</b>	0.131
<b>Disposition correlation 2</b>	0.452***		0.079	
<b>Disposition correlation 1</b>	0.838***		0.025	

N = 808; RMSEA = 0.043;  
CFI = 0.969

\*\*\* p < 0.001;

\*\* p < 0.01;

\* p < 0.05;

+ p < 0.1



Parameter label	Estimation female	Standard error	Estimation male	Standard error
Decision	0.581*	0.244	0.451*	0.201
<b>Individual effects on disposition wave 2</b>				
Disposition wave 1	0.887***	0.141	0.679***	0.140
Working-time	0.009+	0.005	0.002	0.007
Stability of partnership	0.013	0.117	-0.142	0.140
<b>Partner effect on disposition wave 2</b>				
Disposition wave 1	0.233+	0.126	0.594***	0.145
<b>Individual effects on disposition wave 1</b>				
VOC positiv	0.131	0.090	0.239**	0.086
VOC negativ	-0.247***	0.071	-0.095	0.082
Stability of partnership	-0.069	0.076	-0.003	0.094
Working-time	0.017***	0.004	0.002	0.004
Education	0.152***	0.032	0.032	0.034
Age	-0.005***	0.001	0.000	0.001
<b>Couple effects on disposition wave 1</b>				
Flexible childcare	0.325**	0.104	0.249*	0.105
Marital	0.289*	0.116	0.260*	0.121
Duration of relationship	-0.006***	0.001	-0.007***	0.001
Income	-0.015	0.013	-0.028*	0.013
East Germany	-0.154	0.125	-0.018	0.131
<b>Disposition correlation 2</b>	<b>0.452***</b>		0.079	
<b>Disposition correlation 1</b>	<b>0.838***</b>		0.025	

N = 808; RMSEA = 0.043;  
CFI = 0.969

\*\*\* p < 0.001;

\*\* p < 0.01;

\* p < 0.05;

+ p < 0.1

# Summary cross sectional analysis I

- The dispositions of male and female have an effect on the decision of parenthood
  - In hypogenous partnerships the male effect on the decision is negativ
- Males assessed stability of partnership is a negative impact on males and females disposition
  - Especially in hypogenous couples
- Females working-time has a positive effect on males and females disposition
- Females realized negative values for having children have a negative effect on males and females disposition
  - Especially in hypogenous couples

## Summary cross sectional analysis II

- The effect of the access to childcare coming from females
  - in hypergenous couples slightly significant
  - in hypogenous couples strongly significant
- The duration of relationship has a negative effect
- Only for males income has a significant negative influence on the disposition
- Habitation has no effect for eastern german pairs

## Summary longitudinal analysis

- Males and females disposition has a positiv effect on the decision of parenthood
- Females disposition has a positiv effect on males disposition at the following wave
- There are no more effects from males assessed stability of partnership
- Females positive effect of working-time remains
- Females education has a positive effect
- Correlation between the couple dispositon decreases

## Ongoing work

- Which sex has the greater influence on decision making or are they about the same size?
- Identify model parameters
  - Impute non-linear constraints
  - Determine the strength of individual effects by checking customised models

# Hypotheses I

Hypothesis (a):  $\gamma_{1f} = \gamma_{1m}$        $\gamma_{2f} = \gamma_{2m}$        $\gamma_{3f} = \gamma_{3m}$   
 $\gamma_{4f} = \gamma_{4m}$        $\gamma_{5f} = \gamma_{5m}$        $\gamma_{6f} = \gamma_{6m}$

Hypothesis (b):  $\gamma_{7f} = \gamma_{7m}$        $\gamma_{8f} = \gamma_{8m}$        $\gamma_{9f} = \gamma_{9m}$   
 $\gamma_{10f} = \gamma_{10m}$        $\gamma_{11f} = \gamma_{11m}$

Hypothesis (c):  $\beta_{11} = \beta_{12}$

Hypothesis (d):  $\beta_{11} = 0$

Hypothesis (e):  $\beta_{12} = 0$

## Hypotheses II

Hypothesis (f):  $\beta_{21} = \beta_{22}$

Hypothesis (g):  $\beta_{21} = 0$

Hypothesis (h):  $\beta_{22} = 0$

Hypothesis (i):  $\beta_{31} = \beta_{32}$

Hypothesis (j):  $\beta_{31} = 0$

Hypothesis (k):  $\beta_{32} = 0$

# Thank you for your attention

Petra Stein

University of Duisburg-Essen  
Faculty of Social Science  
Institute of Sociology  
47048 Duisburg

GERMANY

E-Mail: [petra\\_stein@uni-due.de](mailto:petra_stein@uni-due.de)

Sebastian Willen

University of Duisburg-Essen  
Faculty of Social Science  
Institute of Sociology  
47048 Duisburg

GERMANY

E-Mail: [sebastian-willen@uni-due.de](mailto:sebastian-willen@uni-due.de)